

PMEA All-State Contemporary A Cappella Ensemble

2024-2025 Audition Requirements

After a very successful inaugural year, PMEA is excited to announce this year's auditions for the PMEA All-State Contemporary A Cappella Ensemble! Contemporary A Cappella is an innovative and creative style of singing that includes many genres of music and relies solely on the human voice. We hope you will consider submitting an audition to be part of the 2025 All-State Contemporary A Cappella Ensemble!

This style requires a different set of skills than what many usually associate with singing in a traditional choir. We encourage you to explore recordings and videos of this style as you prepare to submit an audition. Movement and expression are key elements of contemporary a cappella. While we want these to be evident in your audition, please do not allow them to distract from your overall vocal performance.

With the exception of singing along to the scale tracks for Part 2 - Range Demonstration and the use of a metronome for Part 3 - Vocal Percussion (Beatboxing), ***all portions of the audition must be sung a cappella without tracks or metronomes.***

The Window of Opportunity to submit auditions via SUBMITTABLE is **Monday, November 11, 2024, through Tuesday, January 7, 2025, at NOON**. PMEA will announce the results of the 2025 All-State Contemporary A Cappella Ensemble on Monday, February 3, 2025 on the website - www.pmea.net

PART 1 - Part Singing

These excerpts will be judged and scored by PMEA Directors with experience in the contemporary a cappella style. The PMEA All-State Chorus Rubric will be used to judge the excerpts.

I Wish - SATBB A Cappella - arr. Roger Emerson

Purchase Information

J.W. Pepper - #10066562 - \$2.50 + shipping

<https://www.jwpepper.com/I-Wish/10066562.item>

Listening Link

<https://www.jwpepper.com/sheet-music/media-player.jsp?&type=audio&productID=10066562>

Audition Excerpts

ALL Parts - pick up to measure 55 ('I wish those...') to measure 70

- Soprano, Alto, & Tenor will sing their assigned parts...Sopranos should sing the top notes of the divisi at measure 55
- Basses must sing the BARITONE line

Softest Rains - SSAATTBB A Cappella - Rob Dietz

Purchase Information

J.W. Pepper - #11567968 - \$3.45 + shipping

<https://www.jwpepper.com/Softest-Rains/11567968.item>

Listening Link

<https://www.jwpepper.com/sheet-music/media-player.jsp?&type=audio&productID=11567968>

Audition Excerpts

- **SOPRANO** - sing the Soprano 1 line from the pick up to measure 63 ('To carve...') to the end of measure 78 ('...arms...')
- **ALTO** - sing the Alto 2 line from the pick up to measure 25 ('I dream...') to the fermata at the end of measure 49 ('...beautiful...')
- **TENOR** - sing the Tenor 1 line from the pick up to measure 58 ('...a spring...') to the end of measure 78 ('...arms...')
- **BASS** - sing the Bass 1 line from measure 25 ('dream...') to the fermata at the end of measure 49 ('...beautiful...')

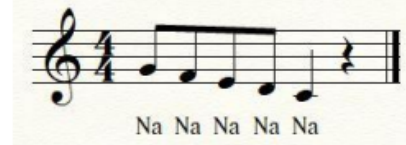
PART 2 - Range Demonstration

All applicants must demonstrate their vocal range by singing along with the [recorded tracks](#) (ascending and descending). Start singing after the count off at the beginning of each track in your most comfortable octave using the syllables written below. Sing as high or low as you are able for each track then stop. These will NOT be scored by the judges but the Guest Conductor will use these recordings to assign parts and solos. We want to hear your full range. Please sing your best but do not allow diminished tone or volume to cut your range demonstration short.

Ascending Pattern



Descending Pattern



PART 3

All applicants must submit **at least one** of the following submissions. Have fun with these and make them your own... we want to hear you **AT YOUR BEST!** These will NOT be considered in the initial judging process, however, the Guest Conductor will have access to the SUBMITTABLE Recordings once the Ensemble has been selected to make assignments based on the selected music program.

EACH SUBMISSION should be 30-60 seconds long

Vocal Percussion (Beatboxing)- This section can include anything and everything you're comfortable with (straight-ahead beats, fills, various sounds, freestyle beatboxing, etc). Record a track with a metronome at 120 bpm that demonstrates the following sounds (snare drum/rim shot, kick drum, hi-hat, a variety of cymbal sounds). The track should begin with 8 measures of a simple beat that demonstrates that you are able to groove and provide a steady beat. You can then transition into any other sounds and styles you would like to demonstrate. The metronome should be a neutral sound that can be heard throughout the recording while not overpowering the performance.

Solo - Choose a solo of any contemporary style (exception: No musical theater or classical, please) that best demonstrates your strongest vocal abilities. The Contemporary A Cappella style features intricate vocal harmonies and rhythms while expressing nearly any genre of music from pop and hip-hop to rock and jazz. The reason for NOT including musical theater or classical styles from the solo audition is based on the techniques used for these styles which may cause the voices to overpower or not mix well with the ensemble as a whole. Record a track that emphasizes your tone, phrasing, intonation, personality, and energy.

Bass Singing - If you would like to be considered to be a featured bass in the ensemble, submit a recording singing measure 35 to the downbeat of measure 47 of the Bass line of 'I Wish' - arr. Roger Emerson. Do your best to highlight a strong bass sound while also demonstrating excellent intonation and style.